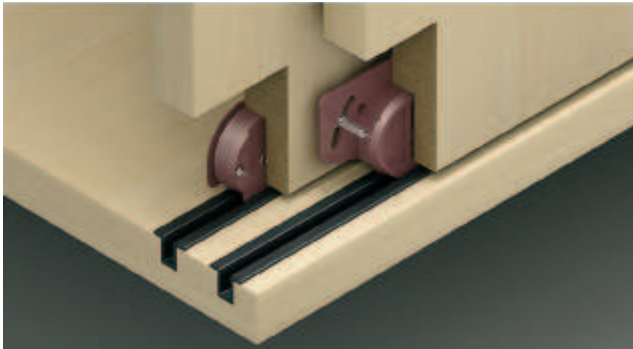
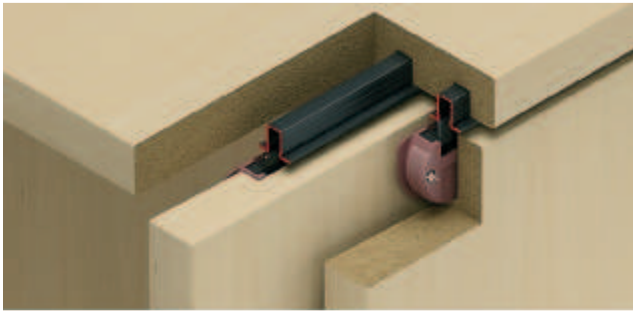
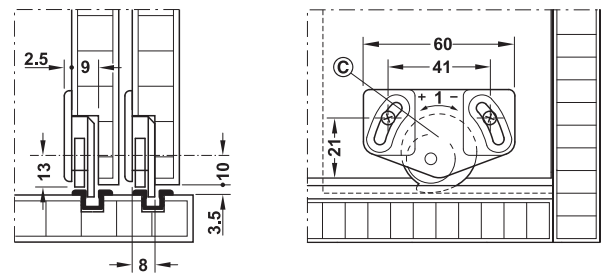
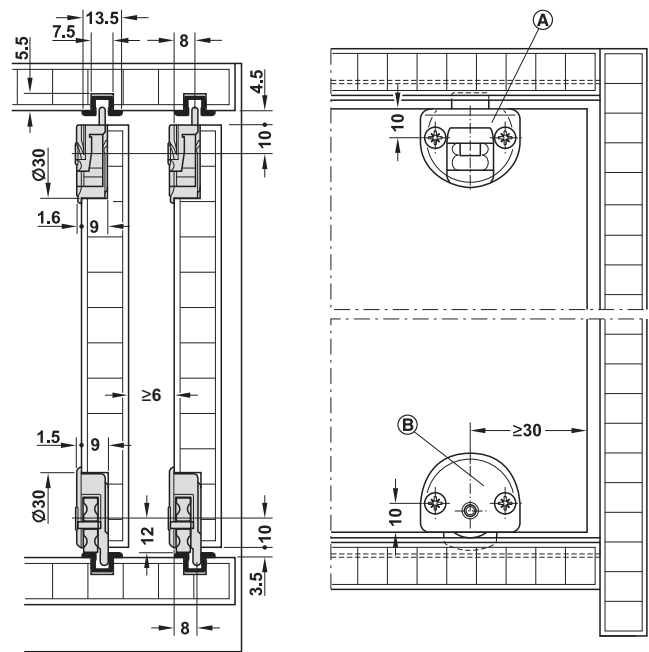


Slido Classic 30 IF

For door weights up to 30 kg



- Door thickness: 15–28 mm
- Height adjustment: ± 1 mm via eccentric screw when using the adjustable running gear
- Material: Plastic
- Running gear: Bottom running
- Running gear guided by: With double bearing mounted axle
- Installation: Track for press fitting and glue fixing into groove, guide and running gear for press fitting and screw fixing in drill hole



- Ⓐ • Single top running track
• Guide with spring loaded or clip-in pin
- Ⓑ • Single bottom guide track
• Running gear without height adjustment
- Ⓒ • Single bottom guide track
• Running gear with height adjustment



→ Set components (individual parts)

		For 1 door	Material	Colour	Packing pieces	Cat. No.
Running gear, with height adjustment ± 1 mm		2 pieces	Plastic	Brown	1, 100 or 500	404.22.151
Running gear		2 pieces	Plastic	Brown	1, 100 or 500	404.22.106
Guide, with clip-in pin		2 pieces	Plastic	Guide: Brown pin: Black	1 or 500	404.21.109
Guide, with spring loaded pin		2 pieces	Plastic	Guide: Brown pin: Black	1 or 500	404.21.154

→ Tracks and individual parts

			Material	Colour	Length m	Cat. No.
Single top/bottom running and guide track	-		Plastic	Brown	2.5	400.55.126
					3.5	400.55.136
Single top/bottom running and guide track	Attention: Routing dimensions vary		Plastic	Brown	3.0	404.14.133
				Black	3.0	404.14.313
				White	3.0	404.14.713
				Silver coloured	3.0	404.14.913

Packing: 1 piece

DGH-M 2012, HDE-en, 09/11; Dimensional data not binding. We reserve the right to alter specifications without notice.

Sliding Doors, Infront

10



Planofit Straightening fitting ► MB 10.219
Handle profile ► MB 10.226